

PROVIDENCE, R. I.
CITY ENGINEER'S OFFICE,
STREET LINE DEPT.

Nov. 4, 1887.

013400.

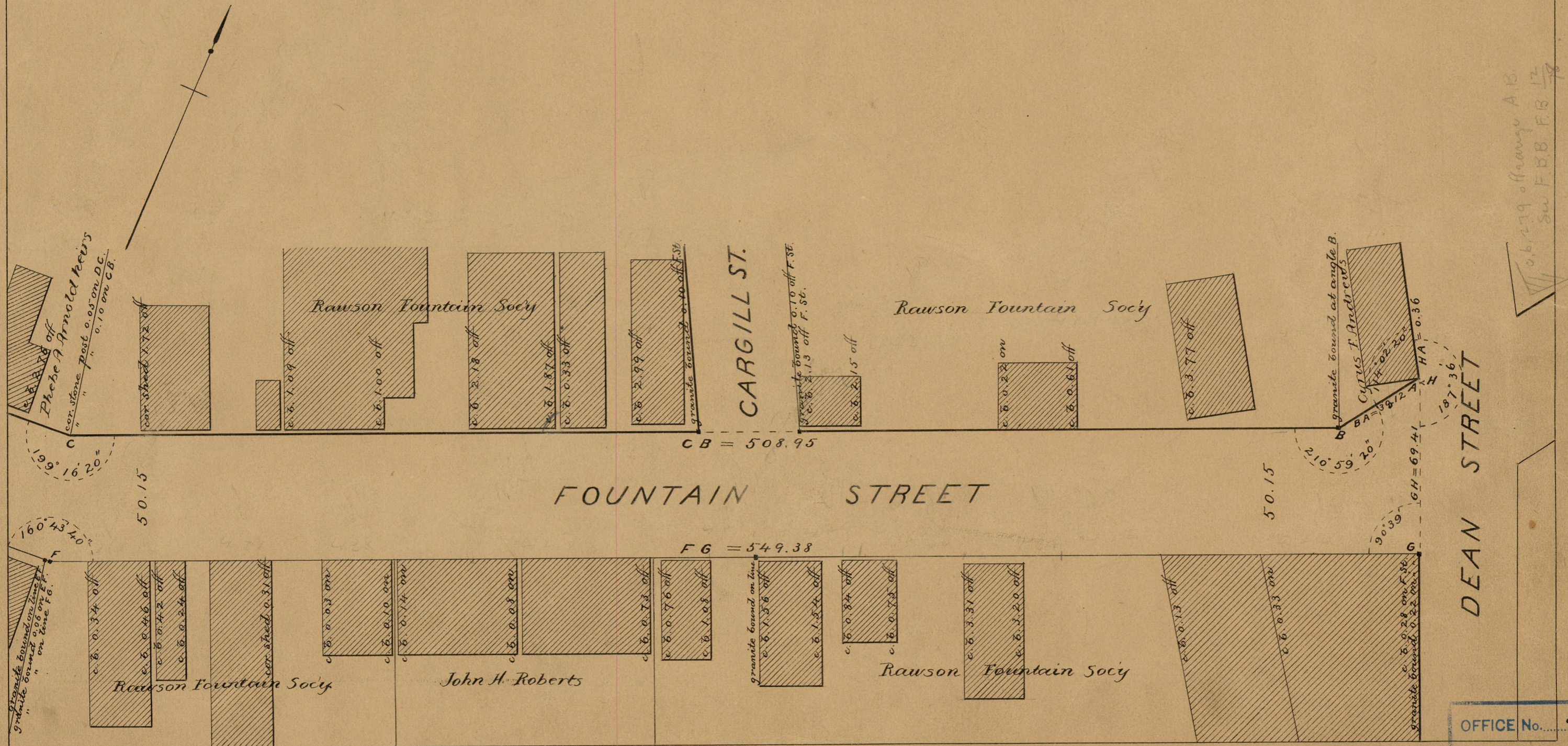
Providence R.I.
This plat accompanies
our report of this date.

PLAT OF FOUNTAIN STREET

FROM DEAN ST. TO BATTEY ST.

IN TWO SHEETS.

SCALE 40 FEET PER INCH.



83
A-64

OFFICE No.	9408
DRAWER	83
SHEET	A-64

a-42